

ULTRA SV/SL



SV



SL

GENERALITA' / FEATURES

Pompe centrifughe multistadio verticali con corpo pompa e parte idraulica in acciaio cromo-nichel AISI 304. Movimentazione di liquidi non carichi nei settori civili, agricoli ed industriali; sistemi di pressurizzazione; irrigazione; acque potabili o con glicole in soluzione; trattamento acque; industria alimentare; riscaldamento e condizionamento; sistemi di lavaggio.

Stainless steel multistage vertical pumps. Pumping of clean non-loaded fluids in the domestic, agricultural and industrial sectors; pressurizing systems; irrigation; drinking and glycol water; water treatment; food industry; heating and air conditioning; washing system.

ULTRA V con bocche contrapposte, ULTRA L con bocche in linea.
ULTRA V with top and bottom bores, ULTRA L with in-line bores.

MATERIALI / MATERIALS

- Corpo pompa: ghisa (SV-SL), acciaio cromo-nichel AISI 304 (SLX a richiesta)
- Flangie aspirazione/mandata corpo pompa: ghisa
- Camicia, giranti, diffusori, disco tenuta meccanica: acciaio cromo-nichel AISI 304
- Albero: acciaio cromo-nichel AISI 303
- Supporto motore: alluminio stampato
- Tenuta meccanica: ceramica-grafite fino a 6 stadi / grafite-carburo di silicio da 7 stadi
- Cuscinetto intermedio guida-albero: ceramica-carburo di tungsteno
- Guarnizioni corpo pompa: NBR
- *Pump body: cast iron (SV-SL), stainless steel AISI 304 (SLX on request)*
- *Flanged suction pump body: cast iron*
- *Flanged delivery pump body: cast iron*
- *Shell, impellers, diffusers, mechanical seal disc holder: AISI 304 chromo-nickel steel*
- *Pump shaft: AISI 303 chromo-nickel steel*
- *Motor bracket: aluminum alloy*
- *Mechanical seal: ceramic-graphite up to 7 stages - graphite-silicon carbide from 6 stages*
- *Intermediate shaft guiding stage bush: ceramic-tungsten carbide*
- *Pump body gasket: NBR*

MOTORE / MOTOR

- Motore a 2 poli ad induzione
- Monofase 230V – 50 Hz dotati di protezione termica fino a 1,85 Kw
- Trifase 230/400 V – 50 Hz
- Isolamento classe F
- Protezione IP 44
- *2 Pole induction Motor*
- *Single Phase 230V - 50Hz with thermal protector up to 1,85 Kw*
- *Three Phase 230-400V - 50 Hz*
- *Insulation class F*
- *Protection degree IP 44*

LIMITI DI IMPIEGO / OPERATING CONDITIONS

- Portata fino a 24 m³/h
- Prevalenza fino a 125 m
- Pressione massima di esercizio 15 bar
- Temperatura d'esercizio del liquido pompato: da -15 a 90°C
- Temperatura ambiente fino a 40°C
- *Capacity: up to 24 m³/h*
- *Total Head: up to 125 m*
- *Maximum working pressure: 15 bar*
- *Maximum liquid temperature: from -15 up to 90 °C*
- *Ambient temperature: up to 40 °C*



ELETTROPOMPE MULTIGIRANTI VERTICALI CON IDRAULICA INOX AISI 304
SS AISI 304 HYDRAULICS VERTICAL MULTISTAGE ELECTRIC PUMPS

CARATTERISTICHE TECNICHE / TECHNICAL PERFORMANCE

Modello - <i>Model</i>		P2		P1 (kW)		Ampere		Q (m³/h - l/min)							
1-	3-	(HP)	(kW)	1-	3-	1- 1x230V 50Hz	3- 3x400V 50Hz	0	1.8	2.4	3.6	4.8	6	7.2	8.4
								0	30	40	60	80	100	120	140
230V - 50Hz		230/400V - 50Hz		H (m)											
U 5SV-120/4 •	U 5SV-120/4 T •	1.2	0.9	1.09	1.03	4.9	2.4	45.5	42.2	40.1	37.2	32.9	27.4	19.8	10.4
U 5...-150/5	U 5...-150/5 T	1.5	1.1	1.39	1.31	6.5	2.7	57.2	53.4	51.7	47.6	42.3	35.2	25.7	14
U 5...-180/6	U 5...-180/6 T	1.8	1.3	1.63	1.55	7.3	3	68.9	64.4	62.3	57.5	51.5	43.5	32.6	18.1
U 5...-200/7	U 5...-200/7 T	2	1.5	1.94	1.77	8.7	3.3	81	75.5	73	67.4	60.3	51	38.6	21
U 5...-250/8	U 5...-250/8 T	2.5	1.85	2.2	2.07	10.1	4	92.1	86.5	84	77.8	70.1	60	45.5	26
U 5...-280/9	U 5...-280/9 T	2.8	2.1	2.45	2.27	11	4.2	103.4	96.7	93.5	86	77.1	65.6	48.7	27.6
U 5...-300/10	U 5...-300/10 T	3	2.2	2.67	2.57	11.9	4.7	114.2	106.4	102.9	95.2	85.2	72	53.3	30
U 5...-350/11	U 5...-350/11 T	3.5	2.57	2.85	2.76	12.9	4.9	125.1	115.7	111.8	102.6	91.6	77.1	57.1	30.7

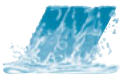
• Disponibile solo in versione SV / *Available SV version only*

Modello - <i>Model</i>		P2		P1 (kW)		Ampere		Q (m³/h - l/min)									
1-	3-	(HP)	(kW)	1-	3-	1- 1x230V 50Hz	3- 3x400V 50Hz	0	2.4	3.6	4.8	6	7.2	8.4	9.6	10.8	
								0	40	60	80	100	120	140	160	180	
230V - 50Hz		230/400V - 50Hz		H (m)													
U 7...-180/4	U 7...-180/4 T	1.8	1.3	1.69	1.62	7.7	3.1	48.0	46.3	45.7	43.6	40.4	36.4	31.4	25.0	17.2	
U 7...-250/5	U 7...-250/5 T	2.5	1.85	2.19	2.05	10.2	4.1	60.3	59.0	58.2	55.7	52.2	47.4	41.3	33.5	22	
U 7...-300/6	U 7...-300/6 T	3	2.2	2.53	2.44	11.4	4.8	72.5	70.5	69.2	66	61.5	55.7	47.8	37.8	24.7	
-	U 7...-350/7 T	3.5	2.57	-	2.84	-	5.1	83.5	80.7	78.8	74.7	69.4	62.6	53.9	42.7	27.5	
-	U 7...-400/8 T	4	3	-	3.3	-	6	95.6	93.3	91.4	87.2	81.6	74.2	64.8	51.9	33	
-	U 7...-450/9 T	4.5	3.31	-	3.81	-	6.5	108.5	106.6	105.1	101	95	87.2	76.6	62.6	39.5	
-	U 7...-550/10 T	5.5	4	-	4.32	-	7.9	121.5	120.1	119.3	115.3	109.2	100.8	89.8	75	55.4	

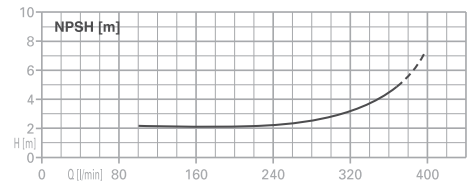
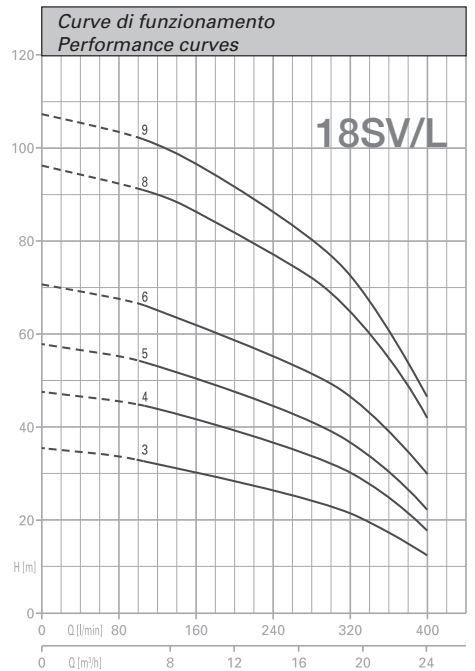
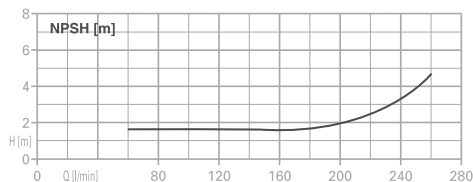
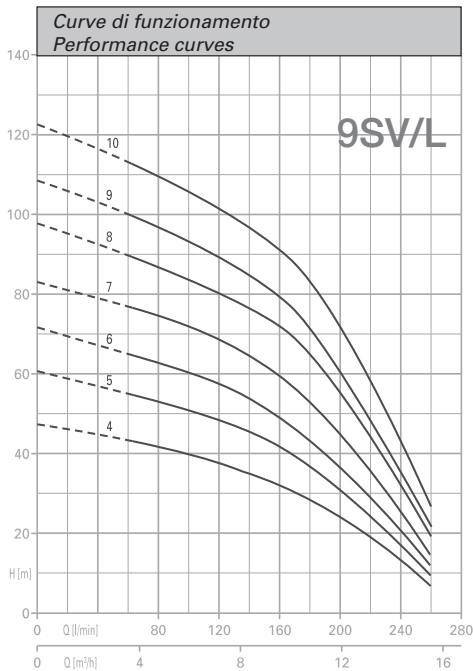
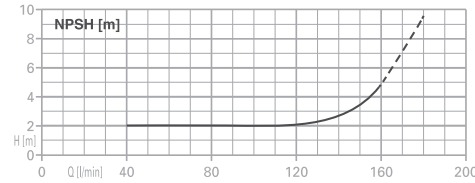
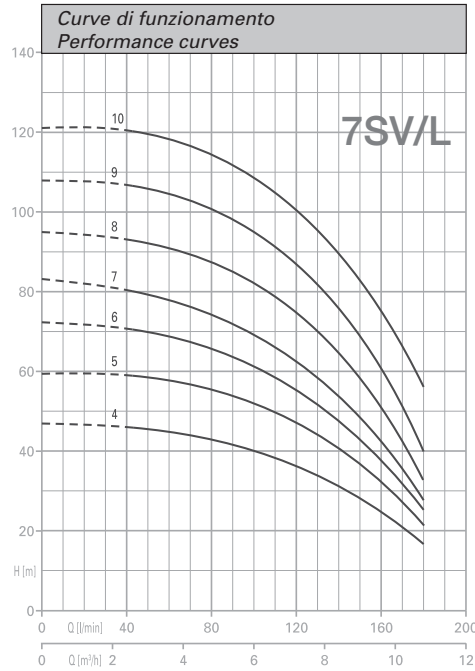
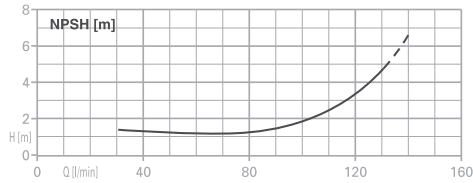
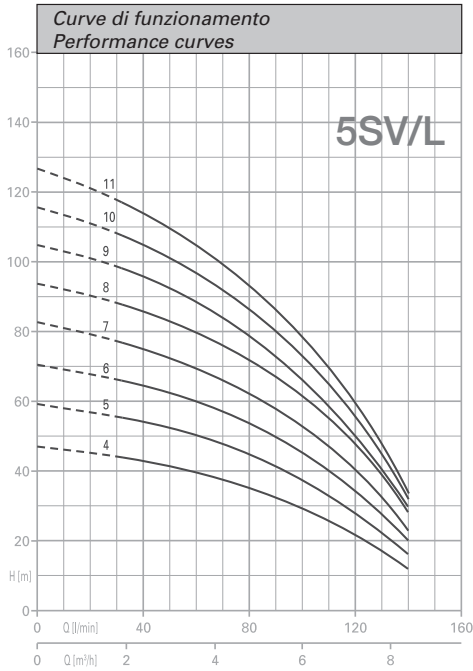
Modello - <i>Model</i>		P2		P1 (kW)		Ampere		Q (m³/h - l/min)														
1-	3-	(HP)	(kW)	1-	3-	1- 1x230V 50Hz	3- 3x400V 50Hz	0	3.6	4.8	6	7.2	8.4	9.6	10.8	12	13.2	14.4	15.6			
								0	60	80	100	120	140	160	180	200	220	240	260			
230V - 50Hz		230/400V - 50Hz		H (m)																		
U 9...-200/4	U 9...-200/4 T	2	1.5	1.88	1.77	8.4	3.3	47.6	43.5	42.1	40.1	38.1	35.7	32.7	28.9	24.2	19	13.1	7.1			
U 9...-250/5	U 9...-250/5 T	2.5	1.85	2.36	2.23	10.8	4.3	60	54.8	53	51	48.2	45.4	42	37.3	31.6	25	18	10.6			
U 9...-300/6	U 9...-300/6 T	3	2.2	2.78	2.58	12.5	4.9	71.8	64.9	63	59.9	57	53.7	49.7	44.3	37	29.5	20.8	11.1			
-	U 9...-400/7 T	4	3	-	3.13	-	5.8	83.3	76.7	74.9	71.8	68.3	64.6	59.9	53.5	44.8	35.9	25.7	14.3			
-	U 9...-450/8 T	4.5	3.31	-	3.72	-	6.4	97.3	89.5	87.3	84	80.5	75.6	71.6	64.8	54.9	44	32.4	19.7			
-	U 9...-500/9 T	5	3.7	-	4.11	-	7	109	100	97.6	93.6	89.5	85	79.4	71.6	60.1	48	34.9	21.9			
-	U 9...-550/10 T	5.5	4	-	4.58	-	8.3	122	112.8	110.5	106.5	102.2	97.3	91.6	82.8	70.7	57.1	42.3	26.5			

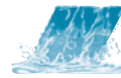
Modello - <i>Model</i>		P2		P1 (kW)	Ampere	Q (m³/h - l/min)																
3-	3-	(HP)	(kW)			3-	3- 3x400V 50Hz	0	6	7.2	8.4	9.6	10.8	12	13.2	14.4	15.6	16.8	18	19.2	20.4	21.6
				0	100			120	140	160	180	200	220	240	260	280	300	320	340	360	380	400
230/400V - 50Hz		H (m)																				
U 18...-250/3 T		2.5	1.85	2.29	4.4	35.7	33.1	32.3	31.3	30.4	29.4	28.4	27.4	26.3	25.1	24	22.8	21.4	19.6	17.8	15.4	12.9
U 18...-400/4 T		4	3	3.11	5.7	47.9	45	44	42.8	41.7	40.5	39.1	37.8	36.6	35.2	33.9	32.2	30.2	28	25.1	22.1	18.1
U 18...-450/5 T		4.5	3.31	3.79	6.7	58.1	54.3	53.1	51.8	50.4	49	47.4	45.9	44.3	42.7	41	39.2	37	34	30.8	26.9	23
U 18...-550/6 T		5.5	4	4.63	8.7	70.5	66.4	65	63.6	62	60.5	58.9	57.2	55.4	53.5	51.5	49.3	46.3	43.3	39.4	34.9	30.4
U 18...-750/8 T		7.5	5.5	6.15	10.9	95.9	90.9	89.58	88	86.1	83.9	81.6	79.5	76.8	74.37	71.8	68.6	65	60.4	55.2	49	42.2
U 18...-900/9 T		9	6.6	7	12.7	106.4	101.8	100.4	98.6	96.1	93.5	91	88.2	85.5	82.7	79.7	76.2	72.1	66.9	60.8	53.67	46.1
U 18SL-850/10 T •		8.5	6.3	7.4	12.6	117.4	111.3	109.2	106.7	104	101.3	98.4	95.4	92	88.8	85.1	81	75.7	70.2	64.1	57	49
U 18SL-1000/11 T •		10	7.5	8.4	14.6	130.5	125	122.8	120.2	117.3	114.4	111.5	108.4	105.4	101.9	98	93.8	88.6	81.7	74.3	65.5	56.8

• Disponibile solo in versione SL / *Available SL version only*

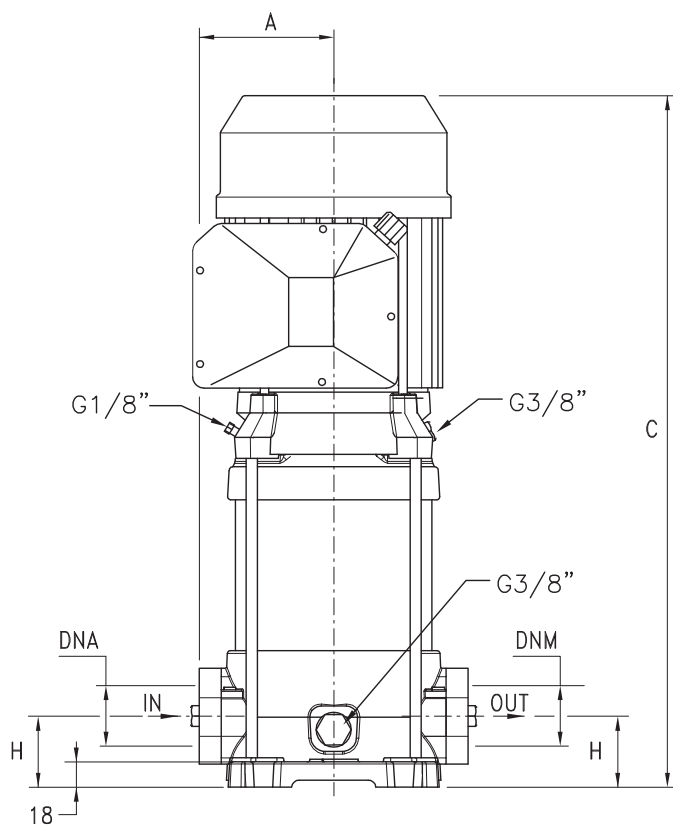
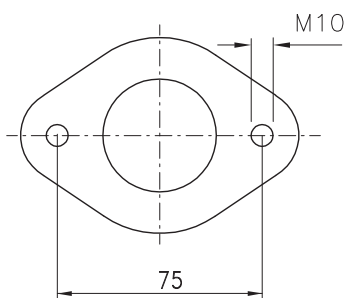
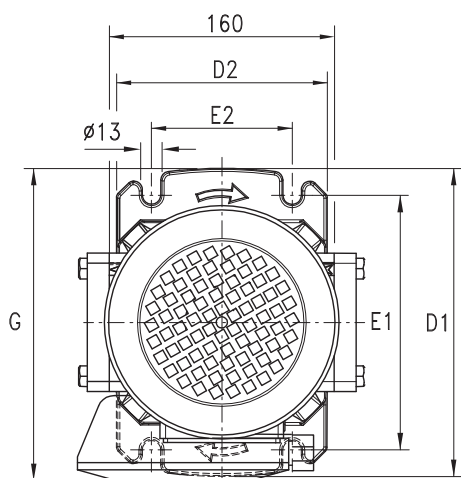


ULTRA SV/SL

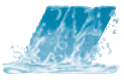




ULTRA 5-7 SL

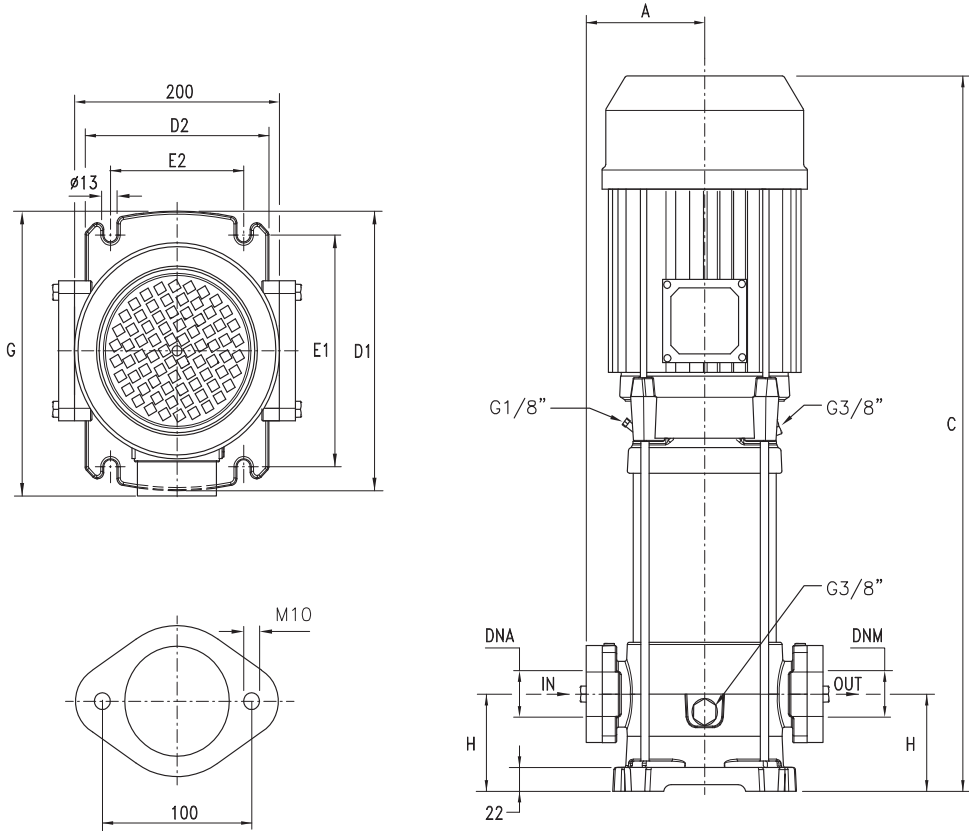


Modello <i>Model</i>	Dimensioni - <i>Dimensions</i>								Peso <i>Weight</i> kg	DNA G	DNM G
	A	C	D1	D2	E1	E2	G	H			
U 5SL-150/5	98	459	220	150	180	100	228	50	23	1" 1/4	1" 1/4
U 5SL-180/6	98	483	220	150	180	100	228	50	24.9		
U 5SL-200/7	98	507	220	150	180	100	228	50	27		
U 5SL-250/8	98	531	220	150	180	100	228	50	28		
U 5SL-280/9	98	M 600 T 555	220	150	180	100	M 236 T 228	50	30.8		
U 5SL-300/10	98	M 624 T 579	220	150	180	100	M 236 T 228	50	31.4		
U 5SL-350/11	98	648	220	150	180	100	236	50	34.7		
U 5SL-180/4	98	435	220	150	180	100	228	50	23.8	1" 1/4	1" 1/4
U 7SL-250/5	98	459	220	150	180	100	228	50	26.1		
U 7SL-300/6	98	M 528 T 483	220	150	180	100	M 236 T 228	50	29		
U 7SL-350/7	98	552	220	150	180	100	236	50	29.8		
U 7SL-400/8	98	576	220	150	180	100	236	50	33.3		
U 7SL-450/9	98	633	220	150	180	100	251	50	37.7		
U 7SL-550/10	98	657	220	150	180	100	251	50	41		

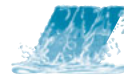


ULTRA SV/SL

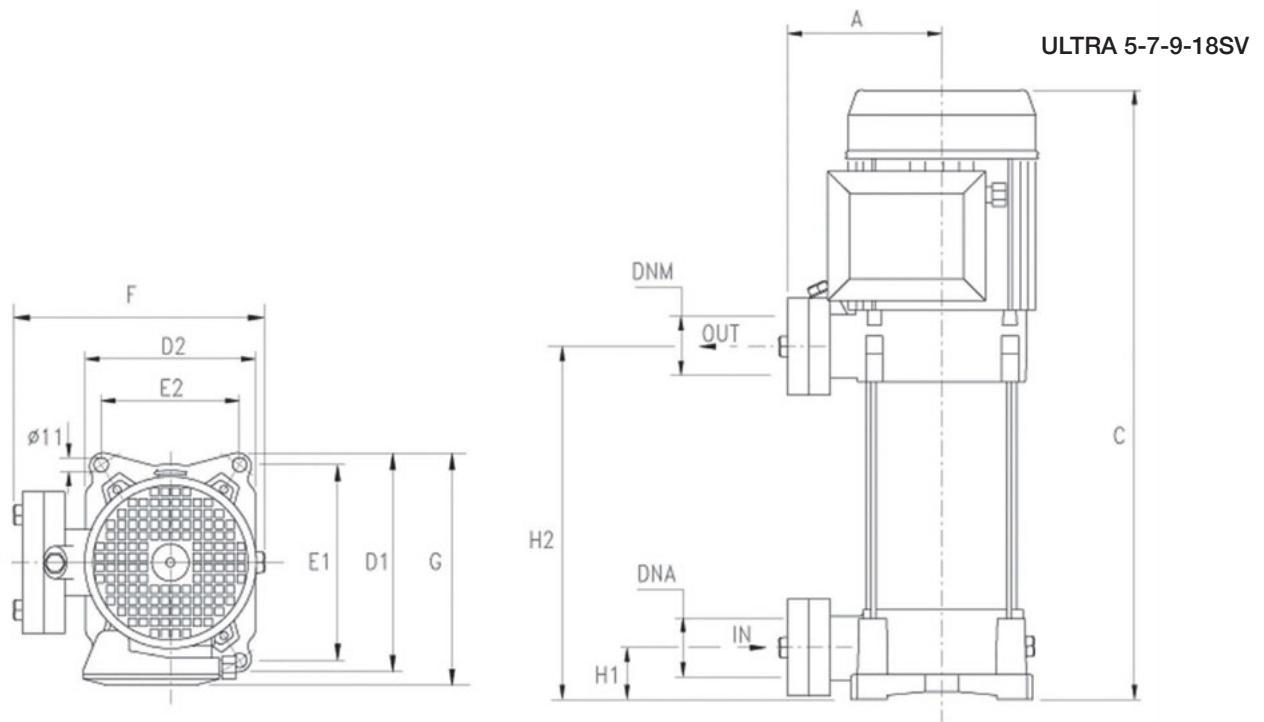
ULTRA 9-18 SL



Modello - Model	Dimensioni - Dimensions								Peso Weight kg	DNA G	DNM G
	A	C	D1	D2	E1	E2	G	H			
U 9SL-200/4	118	490	260	180	215	130	248	80	29.9	1" 1/2	1" 1/2
U 9SL-250/5	118	520	260	180	215	130	248	80	30.9		
U 9SL-300/6	118	M 595 T 550	260	180	215	130	M 256 T 248	80	33.8		
U 9SL-400/7	118	625	260	180	215	130	256	80	37.6		
U 9SL-450/8	118	688	260	180	215	130	271	80	41.3		
U 9SL-500/9	118	718	260	180	215	130	271	80	42.1		
U 9SL-550/10	118	748	260	180	215	130	271	80	45.5		
U 18SL-250/3	118	492	260	180	215	130	248	90	33.5	2"	2"
U 18SL-400/4	118	575	260	180	215	130	256	90	36.1		
U 18SL-450/5	118	646	260	180	215	130	271	90	40.4		
U 18SL-550/6	118	683	260	180	215	130	271	90	44.4		
U 18SL-750/8	118	804	260	180	215	130	280	90	54.3		
U 18SL-900/9	118	842	260	180	215	130	280	90	54.6		
U 18SL-850/10	118	1020	260	180	215	130	307	90	68.6		
U 18SL-1000/11	118	1057	260	180	215	130	307	90	75.6		



ELETTROPOMPE MULTIGIRANTI VERTICALI CON IDRAULICA INOX AISI 304
SS AISI 304 HYDRAULICS VERTICAL MULTISTAGE ELECTRIC PUMPS



Modello <i>Model</i>	Dimensioni - <i>Dimensions</i>										Peso <i>Weight</i> kg	DNA G	DNM G
	A	C	D1	D2	E1	E2	F	G	H1	H2			
U 5SV-120/4	135	389	204	162	178.5	125	229	213	40	178	19.5	1" 1/4	1" 1/4
U 5SV-150/5	135	443	204	162	178.5	125	229	215	40	208.5	22.1		
U 5SV-180/6	135	467	204	162	178.5	125	229	215	40	232.5	23.3		
U 5SV-200/7	135	491	204	162	178.5	125	229	215	40	256.5	25.4		
U 5SV-250/8	135	515	204	162	178.5	125	229	215	40	280.5	26.2		
U 5SV-280/9	135	M 584 T 539	204	162	178.5	125	229	M 230 T 215	40	304.5	28.8		
U 5SV-300/10	135	M 608 T 563	204	162	178.5	125	229	M 230 T 215	40	328.5	29.5		
U 5SV-350/11	135	626	204	162	178.5	125	229	230	40	352.5	32.8		
U 7SV-180/4	135	419	204	162	178.5	125	229	215	40	184.5	22.1		
U 7SV-250/5	135	443	204	162	178.5	125	229	215	40	208.5	24.5		
U 7SV-300/6	135	467	204	162	178.5	125	229	215	40	232.5	27.3		
U 7SV-350/7	135	552	204	162	178.5	125	229	230	40	256.5	28.0		
U 7SV-400/8	135	576	204	162	178.5	125	229	230	40	280.5	31.2		
U 7SV-450/9	135	633	204	162	178.5	125	235	250	40	304.5	36.0		
U 7SV-550/10	135	657	204	162	178.5	125	235	250	40	328.5	39.4		
U 9SV-200/4	135	443	204	162	178.5	125	229	215	40	208.5	23.9		
U 9SV-250/5	135	473	204	162	178.5	125	229	215	40	238.5	24.8		
U 9SV-300/6	135	M 548 T 503	204	162	178.5	125	229	M 230 T 215	40	268.5	27.9		
U 9SV-400/7	135	578	204	162	178.5	125	229	230	40	298.5	31.2		
U 9SV-450/8	135	641	204	162	178.5	125	235	250	40	328.5	35.9		
U 9SV-500/9	135	671	204	162	178.5	125	235	250	40	358.5	36.7		
U 9SV-550/10	135	701	204	162	178.5	125	235	250	40	388.5	40.0		
U 18SV-250/3 T	135	451	204	162	178.5	125	229	215	50	213.5	28.6		
U 18SV-400/4 T	135	534	204	162	178.5	125	229	230	50	251	31.1		
U 18SV-450/5 T	135	605	204	162	178.5	125	235	250	50	288.5	36.2		
U 18SV-550/6 T	135	642	204	162	178.5	125	235	250	50	326	40.0		
U 18SV-750/8 T	135	763	204	162	178.5	125	255	253	50	401	50.4		
U 18SV-900/9 T	135	801	204	162	178.5	125	255	253	50	439	51.0		